

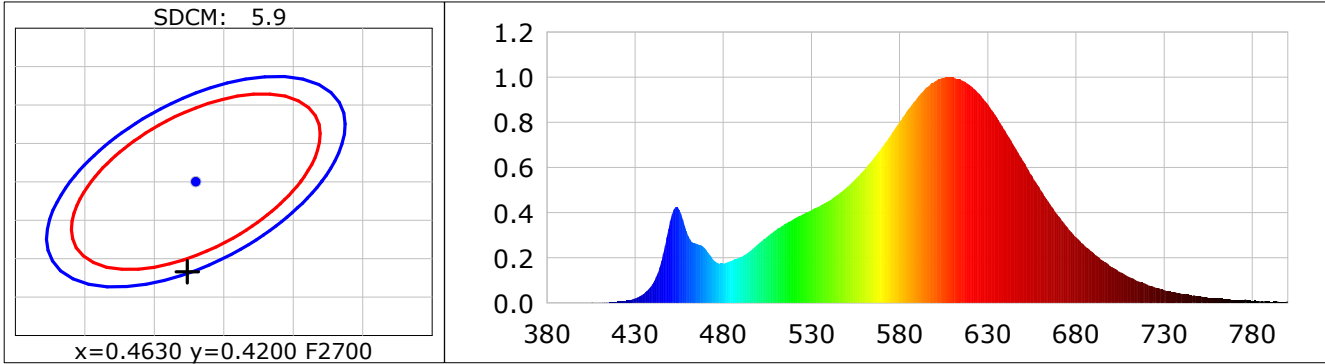
## Lightsource Test Report

**Product Infomation**

Product Category: LED STRIP	Product Type: LED STRIP
Product Spec: THER 8	Product Number: 258
Manufacturer: TECSOLELED S.L.	Buyer: TECSOLELED S.L.

**CIE Colorimetric Parameters**

Chromaticity coordinates:  $x=0.4624$   $y=0.4083$   $u(u')=0.2652$   $v=0.3512$   $v'=0.5268$   
 CCT:  $T_c=2647K$  ( $duv=-0.00106$ )      Color Ratio:  $R=0.258$   $G=0.718$   $B=0.024$   
 Peak Wavelength: 606.3nm      Half Bandwidth: 111.8nm  
 Dominant Wavelength: 584.8nm      Color Purity: 0.614  
 CRI:  $R_a=82.8$ ,  $avgR(1\sim14)=78.5$ ,  $avgR(1\sim15)=78.2$       TM30:  $R_f=85$ ,  $R_g=95$   
 GAI:  $GAI\_BB\_8=96.3$ ,  $GAI\_BB\_15=105.2$ ,  $GAI\_EES=45.2$   
 R1 =82    R2 =94    R3 =93    R4 =80    R5 =83    R6 =94    R7 =79    R8 =57  
 R9 =10    R10=86    R11=80    R12=78    R13=85    R14=97    R15=74  
 Color Quality Scale:  $Q_a=82.7$ ,  $Q_f=85.1$ ,  $Q_p=85.1$ ,  $Q_g=90.3$   
 Q1 =78    Q2 =92    Q3 =86    Q4 =81    Q5 =83    Q6 =84    Q7 =84    Q8 =85  
 Q9 =93    Q10=91    Q11=87    Q12=84    Q13=82    Q14=73    Q15=75



**Photometric Parameters**

Luminous Flux: 1524.4 lm      Efficiency: 146.01 lm/W      Radiant Power: 4.735 W  
 Total mains efficacy: 135.21 lm/W      Energy Efficiency Class: D (EU 2019/2015)

**Electric Parameters**

Voltage: 24.000V      Current: 0.4350A      Power: 10.44W  
 Power Factor: 1.0000      Frequency: 0.00Hz

**Test Infomation**

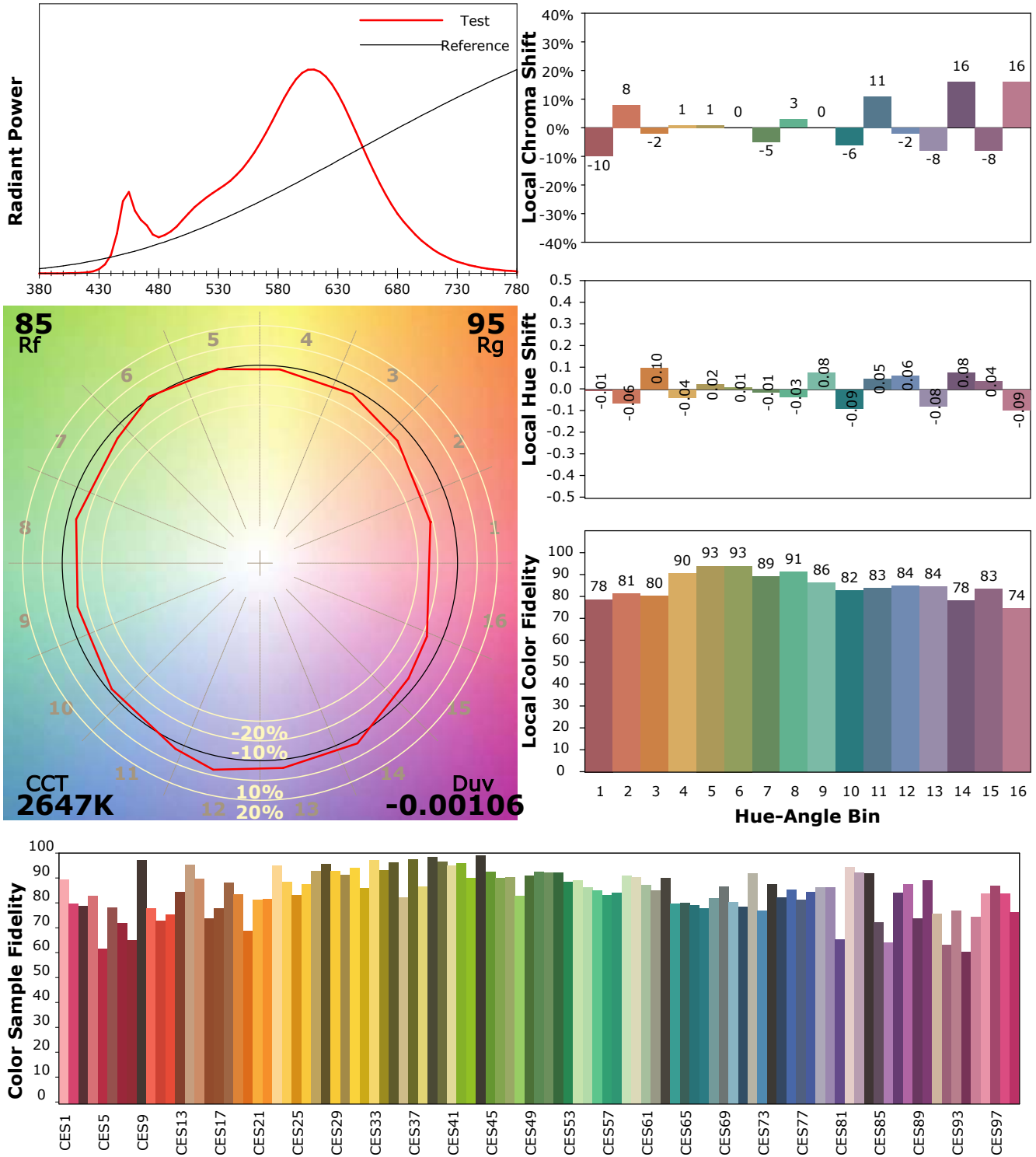
Scan Range: 380~800:1nm	Photometric Method: sphere-spectroradiometer
Stabilization Time: 0 Sec    ALC.: 1.0000	Photometric Condition: Sphere diameter: 1.50m, 4PI
Max of Signal: 47691 (2364)	CCD Integration Time: 447.48 ms

## IES TM-30-18 Color Rendition Report

**Product Information**

Product Category: LED STRIP  
 Product Spec: 21059602440541  
 Manufacturer: TECSOLED S.L.

Product Type: LED STRIP  
 Product Number: 258  
 Buyer: TECSOLED S.L.



Condition: Tx:22.3°C, Ti:19.9°C, R.H.:60%  
 Test Lab: TECSOLED S.L.  
 Operator: JORDAN GIL DIAZ

Test Device: Inventfine CMS-2S (Plus)  
 Test Time: 2021-10-28 15:41:28  
 Inspector: